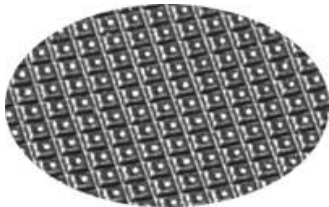


Material Specifications for Seat Pads

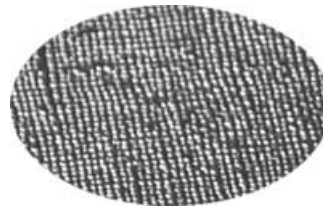
Item	Material	Abrasion ASTM D3386	Cold Crack ASTM D2136	Thread	Grommets	Foam	Webbing
Linen Embossed Seat	19 oz	300 Cycles	Pass -50° F	#135 21.5 lb	#3 Nickel Plated Brass	60 ILD	N/A
I-S Tex Seat	19.4 oz	1481 Cycles	Pass -50° F	#135 21.5 lb	#3 Nickel Plated Brass	60 ILD	N/A

Material

A choice of a 19 oz. linen embossed material or 19.4 oz. I-S Tex. These nylon-coated vinyl materials are designed with the lowest cold crack in the ski industry. Our seat materials are textured for less slippage.



I-S-Tex



Linen Embossed

Foam

Our standard seat foam is a 1.8 lb. 60 ILD 1.5" open cell with a 7 -10 year life. Closed cell foam is available upon request.

Thread

The thread we use is twice as heavy as the thread used by the U.S. Coast Guard. We add extra UVR protection and extra silicone coating for years of extended wear.

Grommets

#3 nickel plated with an extra long shank to ensure secure attachment.

Seat Attachment

Standard attachment is 5/16" industrial strength, fiber covered bungee with heavy dichromated hooks. Custom attachments include straps w/buckles, hook & loop and rubber rope.