

Why Go Rodless?

High impact plastic allows seat to pull evenly while reinforcing grommets.

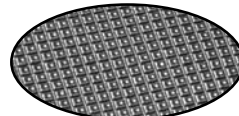


No more rusted messy, metal or fiberglass rods pulled out of your seats!

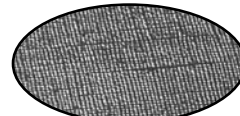
**Idaho Sewing
MANUFACTURES
PADS FOR ALL
BRANDS OF
CHAIR LIFTS.**

Material

Choose from our two seat materials exclusive to Idaho Sewing for Sports, Inc. A 19 oz. linen embossed material or 19.4 oz. I-S Tex. These nylon-coated vinyl materials are designed with the lowest cold crack in the ski industry. Our seat materials are textured for less slippage.



I-S TEX



Linen Embossed

Foam

Our standard seat foam is a 1.8 lb. 60 ILD 1.5" open cell with a 7 -10 year life. Closed cell foam is available upon request.

Thread

The thread we use is twice as heavy as the thread used by the U.S. Coast Guard. We add extra UVR protection and extra silicone coating for years of extended wear.

Grommets

#3 nickel plated with an extra long shank to ensure secure attachment.

Seat Attachment

Standard attachment is 5/16" industrial strength, fiber covered bungee with heavy dichromated hooks. Custom attachments include straps w/buckles, hook & loop and rubber rope.

Weights

Single - 2 lb. each - 25 per box
Double - 4.25 lb. each - 12 per box
Triple - 7.125 lb. each - 7 per box
Quad - 10 lb each - 5 per box
Six Place - 15 lb each 20 per Pallet*

**Six Place Chair Pads are shipped via freight only.*



Pamper your guests with the best SEAT AND BACK PADS.



Don't forget to order your back pads.



We stuff 1,000's of seats for our customers!